



EasyLog

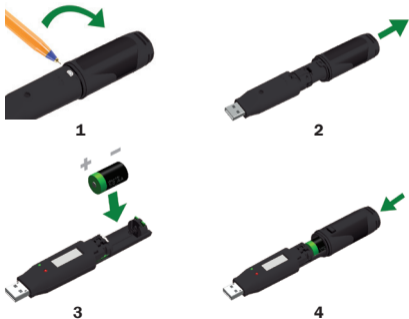
EL-USB



Quick Start Guide

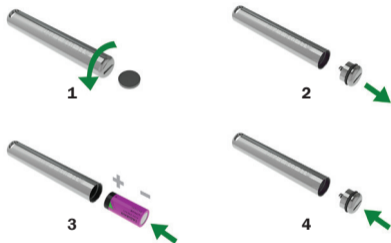
REPLACING YOUR DATA LOGGER'S BATTERY

Your data logger is provided with a 3.6V 1/2AA battery already installed. You can change the battery by following the instructions below.



EL-USB-1 PRO

Before using the data logger you will need to insert the 3.6V 2/3AA High Temperature battery provided, following the instructions below.



EL-USB-1-RCG

The EL-USB-1-RCG's battery is preinstalled. To charge the battery, connect to a USB port until the green LED shows. The rechargeable battery should only be replaced by an authorized supplier.

OUR RANGE



For a full product datasheet for your data logger
or for more information on the rest of the EasyLog range visit
www.lascarelectronics.com/data-loggers

Temperature



Temperature/
Relative Humidity



Voltage



Current



Event, State & Count



Thermocouple



Carbon Monoxide



Thermistor



IMPORTANT SAFETY INFORMATION



Repairing or Modifying

Never attempt to repair or modify Lascar products. Dismantling them, other than for the purpose of changing replaceable batteries, may cause damage that is not covered under the warranty. Servicing should only be provided by an authorized supplier.



Disposal and Recycling Information

You must dispose of Lascar products in accordance with relevant laws and regulations. They contain electronic components and lithium batteries and therefore must be disposed of separately from household waste.

Sales & Support

UK T +44 (0) 1794 884567
E sales@lascar.co.uk

USA T +1 (814) 835-0621
E us-sales@lascarelectronics.com

HK T +852 2389 6502
E sales@lascar.com.hk



EasyLog

www.lascarelectronics.com/data-loggers